



## AVK FOUNTAIN POST "VICTORIA", PN 10

78/7510-001

### Frost proof

The AVK Victoria frost proof fountain post is used for sprinkling public areas and gardens. It is designed in a vintage 1900s style, and is equipped with non-return device and a drip tray with demountable grating for easy cleaning. Pipe connection by means of a 1 1/2" BSP cylindric female thread and oval flange.

### Product description:

Frost proof fountain post for parks and gardens for neutral liquids to max. 70°C

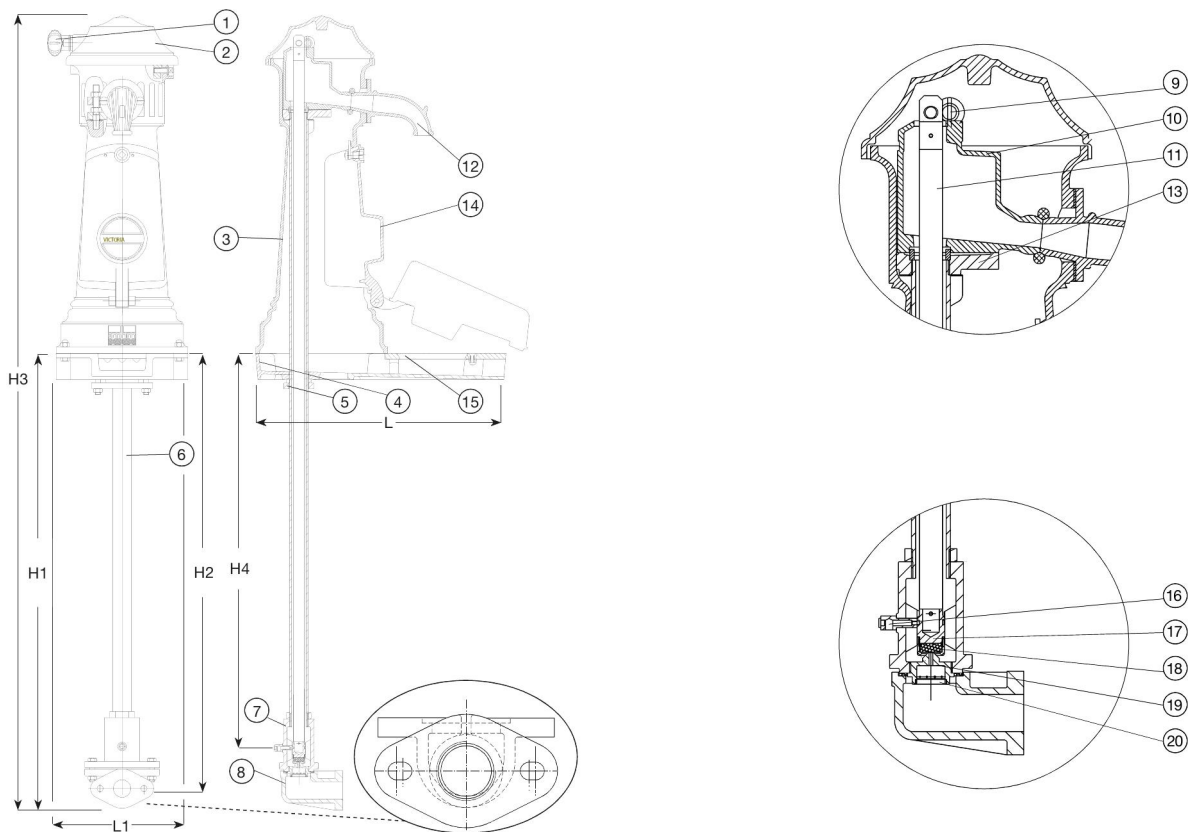
### Features:

- Frost proof
- Trumpet draining system
- Discharge of water by turning the operating knob, which opens the internal shut-off valve
- Equipped with a water saving system with a non-return device
- Drip tray with demountable grating for easy cleaning
- Nozzle has a pin allowing to place a bucket
- Corrosion protection: Epoxy coating of the duck foot and drawing adaptor, and polyester coating on all cast iron parts
- Pipe connection by means of a 40/49 oval threaded flange.



Expect... **AVK**

Frost proof



Component list:

1. Operating knob	Cast iron GJL-250 (GG-25)	11. Extension stem	Steel / epoxy coat
2. Bonnet	Cast iron GJL-250 (GG-25)	12. Tap	Cast iron GJL-250 (GG-25)
3. Body	Cast iron GJL-250 (GG-25)	13. Tank bearing flange	Cast iron GJL-250 (GG-25)
4. Drip tray	Cast iron GJL-250 (GG-25)	14. Hatch	Cast iron GJL-250 (GG-25)
5. Flange	Cast iron GJL-250 (GG-25)	15. Grating	Cast iron GJL-250 (GG-25)
6. Inlet pipe	Steel, galvanized	16. Nozzle	Brass
7. Inlet adaptor	Cast iron GJL-250 (GG-25)	17. Plug	Brass
8. Duckfoot	Cast iron GJL-250 (GG-25)	18. Plug sealing joint	EPDM rubber
9. Lifter	Bronze	19. Water dispenser	Bronze
10. Operating knob	Cast iron GJL-250 (GG-25)	20. Inlet grating	Brass

Components may be substituted with equivalent or higher class materials without prior notification.

Reference nos. and dimensions:

AVK ref. no.	DN	H1	H2	H3	H4	L	L1	Theoretical weight/kg
	mm	mm	mm	mm	mm	mm	mm	
78-040-7510-100	40	1000	990	1780	900	570	300	100